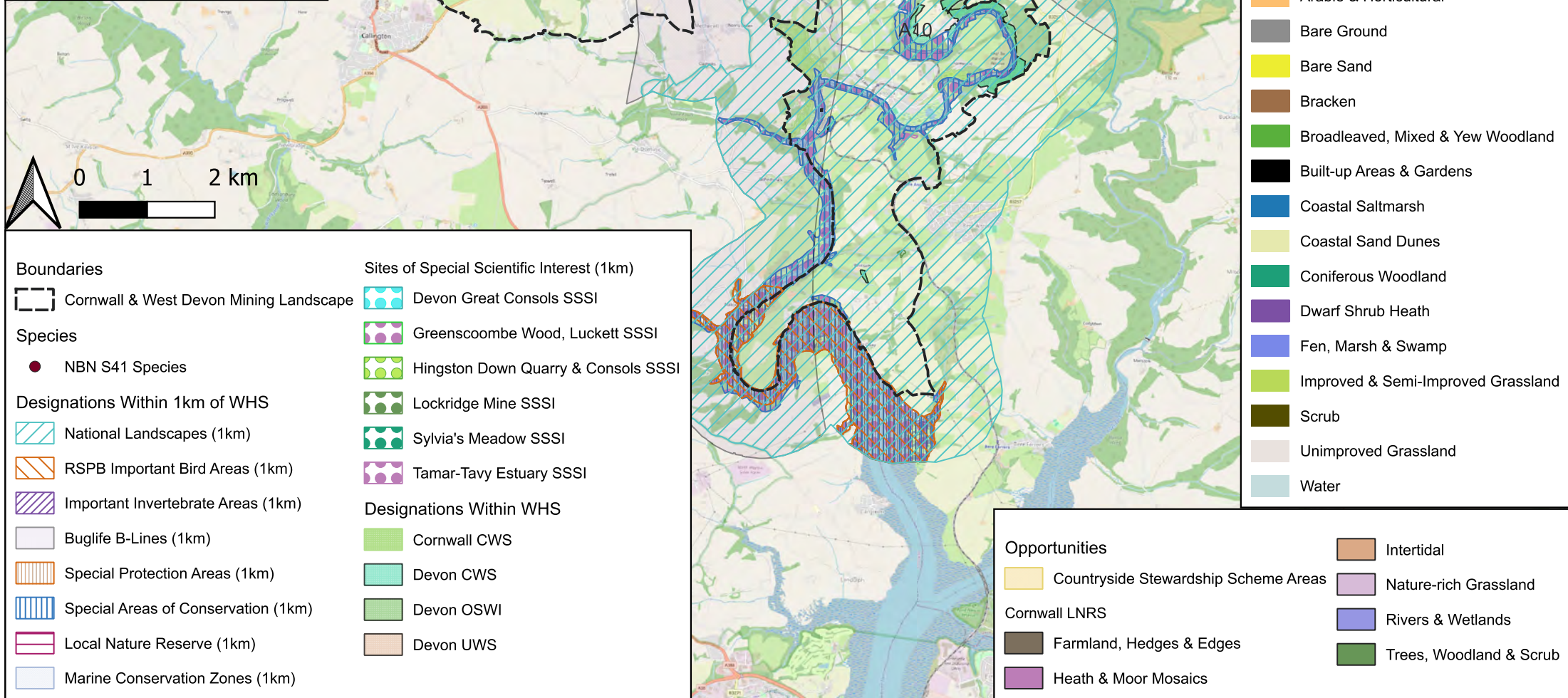


Cornwall and West Devon Mining Landscape World Heritage Site Ecological Audit

Area: A10 Tamar Valley Mining District with Tavistock
Date: 23.03.26

Created by: Colette Holden,
Gain Consulting & Grace
Twiston Davies, Wildflower
Collective.

For map data attributions see
overleaf.



- Living England**
- Arable & Horticultural
 - Bare Ground
 - Bare Sand
 - Bracken
 - Broadleaved, Mixed & Yew Woodland
 - Built-up Areas & Gardens
 - Coastal Saltmarsh
 - Coastal Sand Dunes
 - Coniferous Woodland
 - Dwarf Shrub Heath
 - Fen, Marsh & Swamp
 - Improved & Semi-Improved Grassland
 - Scrub
 - Unimproved Grassland
 - Water

- Boundaries**
- Cornwall & West Devon Mining Landscape
- Species**
- NBN S41 Species
- Designations Within 1km of WHS**
- National Landscapes (1km)
 - RSPB Important Bird Areas (1km)
 - Important Invertebrate Areas (1km)
 - Buglife B-Lines (1km)
 - Special Protection Areas (1km)
 - Special Areas of Conservation (1km)
 - Local Nature Reserve (1km)
 - Marine Conservation Zones (1km)

- Sites of Special Scientific Interest (1km)**
- Devon Great Consols SSSI
 - Greenscombe Wood, Luccett SSSI
 - Hingston Down Quarry & Consols SSSI
 - Lockridge Mine SSSI
 - Sylvia's Meadow SSSI
 - Tamar-Tavy Estuary SSSI
- Designations Within WHS**
- Cornwall CWS
 - Devon CWS
 - Devon OSWI
 - Devon UWS

- Opportunities**
- Countryside Stewardship Scheme Areas
 - Intertidal
 - Farmland, Hedges & Edges
 - Nature-rich Grassland
 - Heath & Moor Mosaics
 - Rivers & Wetlands
 - Trees, Woodland & Scrub
- Cornwall LNRS**

© Historic England 2026. Contains Ordnance Survey data © Crown copyright and database right 2026.

© Natural England copyright. Contains Ordnance Survey data © Crown copyright and database right 2026.

Map data copyrighted © OpenStreetMap contributors and available from <https://www.openstreetmap.org>

Imagery ©2026 Airbus, Landsat / Copernicus, Maxar Technologies Map Data ©2026 Google.

Contains Ordnance Survey data © Crown Copyright and database rights (2026) Licence number 100049047.

The Historic England GIS Data contained in this material was obtained on 31/10/25. The most publicly available up to date Historic England GIS Data can be obtained from [HistoricEngland.org.uk](https://www.historicengland.org.uk). Licensed under the Open Government Licence v.3.0.

B-Lines map Copyright © 2025 Buglife. CCBY4.0.

Cornwall County Wildlife Sites map data provided by the Environmental Records Centre for Cornwall and the Isles of Scilly (ERCCIS) © 2025.

Countryside Stewardship Schemes Areas map data © Rural Payments Agency copyright. Contains Ordnance Survey data © Crown copyright and database right 2024.

Devon County Wildlife Sites, Unclassified Wildlife Sites and Other Sites of Wildlife Interest maps contains DBRC data © cannot be copied, republished or used for commercial purposes.

Important Bird Areas (IBA) map data reproduced with the permission of RSPB. © Crown Copyright. Ordnance Survey licence number AC0000813580 (2026).

Important Invertebrate Area (IIA) boundaries provided by Buglife © 2026. Contains public sector information licensed under CC-BY 4.0.

Living England map © Natural England 2026. Contains: OS data © Crown copyright and database rights 2023 OS Licence AC0000851168; Natural England Licence No. 2011/052; British Geological Survey © NERC. All rights reserved; © Environment Agency 2023.

Contains Local Nature Recovery Strategy (LNRS) mapping 2026 © Cornwall Council & Cornwall and Isles of Scilly Local Nature Partnership.

RSPB Reserves map data reproduced with the permission of RSPB. © Crown Copyright. Ordnance Survey licence number AC0000813580 (2026).

RSPB Priority Landscapes map data reproduced with the permission of RSPB. © Crown Copyright. Ordnance Survey licence number 100021787 (2026).

Section 41 Species data from NBN Trust (2025). The National Biodiversity Network (NBN) Atlas.

NBN Atlas occurrence download at <https://nbnatlas.org> accessed on 17/11/25, Records provided by Amphibian and Reptile Conservation, Amphibian and Reptile Groups (ARG UK), Balfour-Browne Club, Bat Conservation Trust, Biological Records Centre, Botanical Society of Britain and Ireland (BSBI), British Bryological Society, British Lichen Society, British Mycological Society, British Trust for Ornithology (BTO), Butterfly Conservation, Centre for Environmental Data and Recording (CEDaR), Conchological Society of Great Britain & Ireland, Dipterists Forum, and Biological Records Centre, Environment Agency, Freshwater Fish Recording Scheme, Froglife, Hutchinson Ecological Associates, Hypogean Crustacea Recording Scheme, Joint Nature Conservation Committee, Marine Biological Association, Marine Conservation Society, Marine Environmental Monitoring, National Trust, Natural England, Natural Resources Wales, Oil Beetle Recording Scheme, People's Trust for Endangered Species, Plantlife International, Porcupine Natural History Society, Royal Society for the Protection of Birds (RSPB), Seasearch, Soldierflies and Allies Recording Scheme, The British Association for Shooting and Conservation, The Mammal Society, The Open University, The Road Lab, UK Butterfly Monitoring Scheme (UKBMS), accessed through the NBN Atlas website.