

# Cornwall and West Devon Mining Landscape World Heritage Site Ecological Audit

Area: A6 Gwennap Mining District with  
Devoran, Perran & Kennall Vale  
Date: 23.03.26

Created by: Colette Holden, Gain Consulting  
& Grace Twiston Davies, Wildflower  
Collective.

For map data attributions see overleaf.

## Boundaries

Cornwall & West Devon Mining Landscape

## Species

NBN S41 Species

## Designations Within WHS & 1km Buffer

National Landscapes (1km)

RSPB Important Bird Areas (1km)

Important Invertebrate Areas (1km)

Special Protection Areas (1km)

Special Areas of Conservation (1km)

## Sites of Special Scientific Interest (1km)

Carrick Heaths SSSI

Carrine Common & Penwethers SSSI

West Cornwall Bryophytes SSSI

Wheal Gorland SSSI

## Designations Within WHS

Cornwall CWS

## Habitats & Landcover

### Living England

Arable & Horticultural

Bare Ground

Bare Sand

Bracken

Broadleaved, Mixed & Yew Woodland

Built-up Areas & Gardens

Coastal Saltmarsh

Coniferous Woodland

Dwarf Shrub Heath

Fen, Marsh & Swamp

Improved & Semi-Improved Grassland

Scrub

Unimproved Grassland

Water

## Opportunities

Countryside Stewardship Scheme Areas

## Cornwall LNRS

Coastal Wildbelt

Farmland, Hedges & Edges

Heath & Moor Mosaics

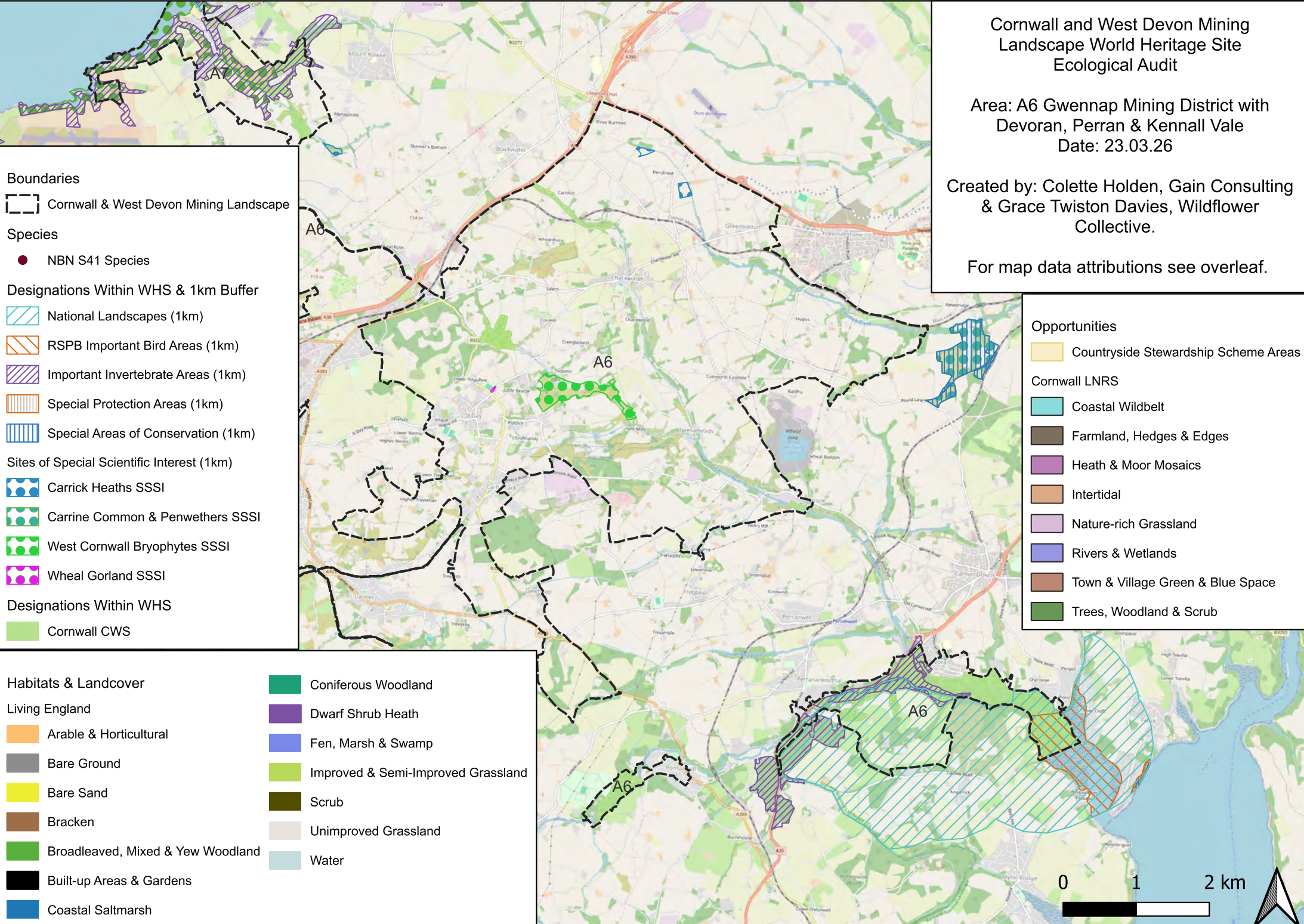
Intertidal

Nature-rich Grassland

Rivers & Wetlands

Town & Village Green & Blue Space

Trees, Woodland & Scrub



© Historic England 2026. Contains Ordnance Survey data © Crown copyright and database right 2026.

© Natural England copyright. Contains Ordnance Survey data © Crown copyright and database right 2026.

Map data copyrighted © OpenStreetMap contributors and available from <https://www.openstreetmap.org>

Imagery ©2026 Airbus, Landsat / Copernicus, Maxar Technologies Map Data ©2026 Google.

Contains Ordnance Survey data © Crown Copyright and database rights (2026) Licence number 100049047.

The Historic England GIS Data contained in this material was obtained on 31/10/25. The most publicly available up to date Historic England GIS Data can be obtained from [HistoricEngland.org.uk](https://historicengland.org.uk). Licensed under the Open Government Licence v.3.0.

Cornwall County Wildlife Sites map data provided by the Environmental Records Centre for Cornwall and the Isles of Scilly (ERCCIS) © 2025.

Countryside Stewardship Schemes Areas map data © Rural Payments Agency copyright. Contains Ordnance Survey data © Crown copyright and database right 2024.

Important Bird Areas (IBA) map data reproduced with the permission of RSPB. © Crown Copyright. Ordnance Survey licence number AC0000813580 (2026).

Important Invertebrate Area (IIA) boundaries provided by Buglife © 2026. Contains public sector information licensed under CC-BY 4.0.

Living England map © Natural England 2026. Contains: OS data © Crown copyright and database rights 2023 OS Licence AC0000851168; Natural England Licence No. 2011/052; British Geological Survey © NERC. All rights reserved; © Environment Agency 2023.

Contains Local Nature Recovery Strategy (LNRS) mapping 2026 © Cornwall Council & Cornwall and Isles of Scilly Local Nature Partnership.

Section 41 Species data from NBN Trust (2025). The National Biodiversity Network (NBN) Atlas.

NBN Atlas occurrence download at <https://nbnatlas.org> accessed on 17/11/25, Records provided by Amphibian and Reptile Conservation, Amphibian and Reptile Groups (ARG UK), Balfour-Browne Club, Bat Conservation Trust, Biological Records Centre, Botanical Society of Britain and Ireland (BSBI), British Bryological Society, British Lichen Society, British Mycological Society, British Trust for Ornithology (BTO), Butterfly Conservation, Centre for Environmental Data and Recording (CEDaR), Conchological Society of Great Britain & Ireland, Dipterists Forum, and Biological Records Centre, Environment Agency, Freshwater Fish Recording Scheme, Froglife, Hutchinson Ecological Associates, Hypogean Crustacea Recording Scheme, Joint Nature Conservation Committee, Marine Biological Association, Marine Conservation Society, Marine Environmental Monitoring, National Trust, Natural England, Natural Resources Wales, Oil Beetle Recording Scheme, People's Trust for Endangered Species, Plantlife International, Porcupine Natural History Society, Royal Society for the Protection of Birds (RSPB), Seasearch, Soldierflies and Allies Recording Scheme, The British Association for Shooting and Conservation, The Mammal Society, The Open University, The Road Lab, UK Butterfly Monitoring Scheme (UKBMS), accessed through the NBN Atlas website.