

Boundaries

Cornwall & West Devon Mining Landscape

Species

NBN S41 Species

Designations Within WHS & 1km Buffer

National Landscapes (1km)

Important Invertebrate Areas (1km)

Buglife B-Lines (1km)

Special Areas of Conservation (1km)

RSPB Priority Landscapes (1km)

Sites of Special Scientific Interest (1km)

Cameron Quarry SSSI

Carrick Heaths SSSI

Cligga Head SSSI

Godrevy Head to St Agnes SSSI

Penhale Dunes SSSI

St. Agnes Beacon Pits SSSI

Trevaunance Cove SSSI

Designations Within WHS

Cornwall CWS

Habitats & Landcover

Living England

Arable & Horticultural

Bare Ground

Bare Sand

Bracken

Broadleaved, Mixed & Yew Woodland

Built-up Areas & Gardens

Coastal Saltmarsh

Coastal Sand Dunes

Coniferous Woodland

Dwarf Shrub Heath

Fen, Marsh & Swamp

Improved & Semi-Improved Grassland

Scrub

Unimproved Grassland

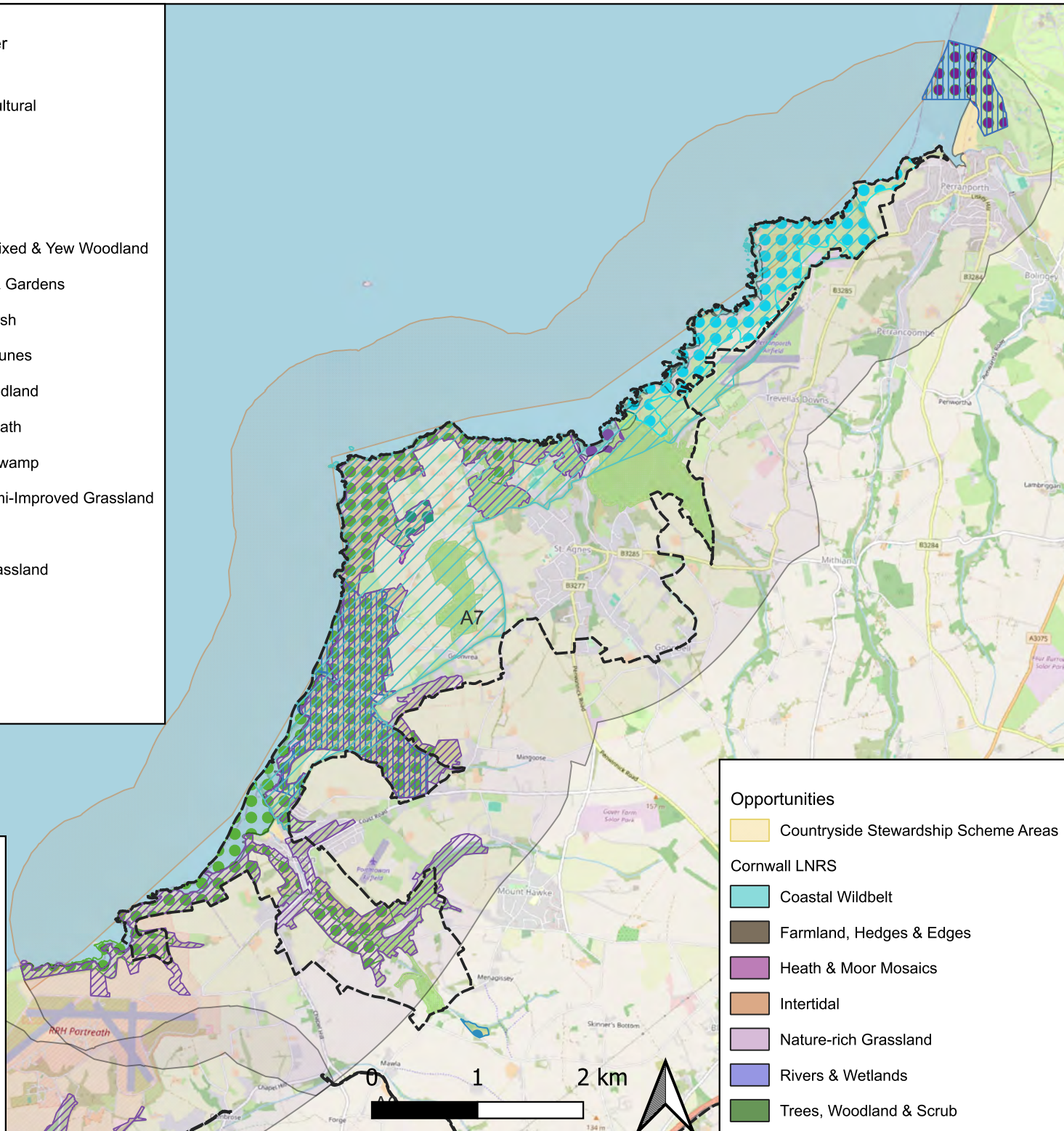
Water

Cornwall and West Devon Mining Landscape World Heritage Site Ecological Audit

Area: A7 St Agnes Mining District
Date: 23.03.26

Created by: Colette Holden, Gain Consulting & Grace Twiston Davies, Wildflower Collective.

For map data attributions see overleaf.



Opportunities

Countryside Stewardship Scheme Areas

Cornwall LNRS

Coastal Wildbelt

Farmland, Hedges & Edges

Heath & Moor Mosaics

Intertidal

Nature-rich Grassland

Rivers & Wetlands

Trees, Woodland & Scrub

© Historic England 2026. Contains Ordnance Survey data © Crown copyright and database right 2026.

© Natural England copyright. Contains Ordnance Survey data © Crown copyright and database right 2026.

Map data copyrighted © OpenStreetMap contributors and available from <https://www.openstreetmap.org>

Imagery ©2026 Airbus, Landsat / Copernicus, Maxar Technologies Map Data ©2026 Google.

Contains Ordnance Survey data © Crown Copyright and database rights (2026) Licence number 100049047.

The Historic England GIS Data contained in this material was obtained on 31/10/25. The most publicly available up to date Historic England GIS Data can be obtained from [HistoricEngland.org.uk](https://www.historicengland.org.uk). Licensed under the Open Government Licence v.3.0.

B-Lines map Copyright © 2025 Buglife. CCBY4.0.

Cornwall County Wildlife Sites map data provided by the Environmental Records Centre for Cornwall and the Isles of Scilly (ERCCIS) © 2025.

Countryside Stewardship Schemes Areas map data © Rural Payments Agency copyright. Contains Ordnance Survey data © Crown copyright and database right 2024.

Important Invertebrate Area (IIA) boundaries provided by Buglife © 2026. Contains public sector information licensed under CC-BY 4.0.

Living England map © Natural England 2026. Contains: OS data © Crown copyright and database rights 2023 OS Licence AC0000851168; Natural England Licence No. 2011/052; British Geological Survey © NERC. All rights reserved; © Environment Agency 2023.

Contains Local Nature Recovery Strategy (LNRS) mapping 2026 © Cornwall Council & Cornwall and Isles of Scilly Local Nature Partnership.

RSPB Priority Landscapes map data reproduced with the permission of RSPB. © Crown Copyright. Ordnance Survey licence number 100021787 (2026).

Section 41 Species data from NBN Trust (2025). The National Biodiversity Network (NBN) Atlas.

NBN Atlas occurrence download at <https://nbnatlas.org> accessed on 17/11/25, Records provided by Amphibian and Reptile Conservation, Amphibian and Reptile Groups (ARG UK), Balfour-Browne Club, Bat Conservation Trust, Biological Records Centre, Botanical Society of Britain and Ireland (BSBI), British Bryological Society, British Lichen Society, British Mycological Society, British Trust for Ornithology (BTO), Butterfly Conservation, Centre for Environmental Data and Recording (CEDaR), Conchological Society of Great Britain & Ireland, Dipterists Forum, and Biological Records Centre, Environment Agency, Freshwater Fish Recording Scheme, Froglife, Hutchinson Ecological Associates, Hypogean Crustacea Recording Scheme, Joint Nature Conservation Committee, Marine Biological Association, Marine Conservation Society, Marine Environmental Monitoring, National Trust, Natural England, Natural Resources Wales, Oil Beetle Recording Scheme, People's Trust for Endangered Species, Plantlife International, Porcupine Natural History Society, Royal Society for the Protection of Birds (RSPB), Seasearch, Soldierflies and Allies Recording Scheme, The British Association for Shooting and Conservation, The Mammal Society, The Open University, The Road Lab, UK Butterfly Monitoring Scheme (UKBMS), accessed through the NBN Atlas website.