

# cornish mining

newsletter of the Cornwall & West Devon Mining World Heritage Site

Spring 2008

## Mine & Yours

Cornish Mining Cultural  
Events Programme  
Conservation

[www.cornishmining.org.uk](http://www.cornishmining.org.uk)

Our mining culture  
shaped your world





A selection of World Heritage Site Area pages from the new activity guide 'Mine & Yours'

# Mine & Yours

For the summer of 2008 we have commissioned a promotional campaign to raise awareness of the Cornish Mining World Heritage Site (WHS). The campaign includes the new activity guide entitled 'Mine & Yours', which details each of the ten landscapes which comprise the Site and some of the exciting experiences that await the visitor.

The Cornish Mining WHS is the largest in the United Kingdom at just under 20,000 hectares and, as such, requires a carefully conceived guide to enable users to gain the most from their visits. Dramatic cliff-top settings, broad sweeping moorlands and lush wooded valleys can all be found within the 'serial' WHS, a wide variety of landscapes which need to be experienced to fully appreciate the amazing story of the development of metalliferous mining in Cornwall and west Devon.

'Mine & Yours' encourages exploration of the World Heritage landscapes and provides clear information of how to best interact with the wealth of mining heritage on offer. To enable this, maps are included within each of the ten sections highlighting some of the principal heritage features of that Area in addition to relevant roads and heritage trails to aid orientation. Additional information is also featured for the further convenience of visitors including places to eat and stay, and details of public transport and car parking.

In addition to encouraging interaction with the Site, the aim of the guide is to stimulate visitors to pass on their personal experiences of their visits: what they have learned from a trip

perhaps, or what sights and sounds were memorable. It is hoped that sketches, text, images and video clips created by visitors will be submitted for use on the dedicated website ([www.cornishmining.com/mineandyoure](http://www.cornishmining.com/mineandyoure)) in addition to being used to create possible future editions of the guide.

Local design company, Empress of Penryn, were commissioned to produce the guide and also oversee construction of the accompanying mobile display, the "Mine Traveller", an installation designed by Porthleven based company, Boex. Both the activity guide and the display highlight fascinating but little known facts about Cornish Mining and are designed to present the mining landscape in an informative and appealing manner.

The 'Mine & Yours' campaign also includes a series of public events at Cornish Mining attractions, commencing with a day of special activities at Morwellham Quay on 31st May. This coincides with the declaration of Morwellham as a 'Key Centre' for interpretation of the WHS.

A major programme of conservation and interpretation improvement

works have been undertaken at Morwellham recently, as part of the Tamar Valley Mining Heritage Project, and at 1 pm there will also be an opportunity to celebrate the official re-opening of the restored Great Dock with the Tamar Valley AONB team. These mineral quays saw the export of thousands of tons of copper ore and arsenic during the nineteenth century and have now been conserved for future generations.

Many of Morwellham's favourite attractions, including the costumed interpreters and the underground tour of George & Charlotte Mine will be available during the day, together with the 'Mine & Yours' guide and the mobile WHS display, 'Mine Traveller'. Why not come and join us on the day?



Our mining culture shaped your world

# CORNISH MINING CULTURAL EVENTS PROGRAMME

The Cornish Mining World Heritage Site promotes cultural activities which communicate its Outstanding Universal Value. Re-affirming Cornish Mining culture - including its artistic traditions - as a distinctive, globally significant expression of an evolving industrial society is one of the key policy aims in the WHS Management Plan.

## Cornish Lads: A musical drama of hard-rock mining

Cornwall Songwriters have been commissioned by the Cornish Mining World Heritage Site to devise and present 'Cornish Lads', a performance celebrating the contribution of the men and women of Cornwall and west Devon to the globalisation of hard-rock mining.

Directed by musician and producer Mike O'Connor, 'Cornish Lads' is a truly riveting tale that engages audiences to the extent that they too become part of the performance. This magnificent show explores the mining landscapes and tells of its creators in songs that are by turns powerful, emotive and inspirational. They take us to a world of innovation, a world of danger, and a world of hope for the future. Cornwall Songwriters' previous shows, 'The Cry of Tin' and 'Unsung Heroes', were both critical and commercial successes and have left their mark on the music of Cornwall. Susan Pellowe of 'Plays International' praised 'The Cry of Tin' in 2002 as "...radical theatre at its best."

Cornwall Songwriters is itself a pioneering organisation. It supports songwriters and performers locally and has produced three folk operas with great success. 'Cornish Lads' is their tribute to a landscape which is truly of World Heritage value.

Deborah Boden, World Heritage Site Co-ordinator, commented "The Cornish Mining WHS Cultural Events Programme seeks to increase awareness and appreciation of the distinctiveness of Cornish Mining culture. It has been designed to both contribute to the evolution of this culture, through encouraging contemporary activity that responds to its cultural inheritance, and to find

**CORNISH LADS**

Cornwall Songwriters  
A Musical Drama of Hard Rock Mining  
Directed by Mike O'Connor

**Catch the show at the following!**

Date	Venue Name
30th May 2008	<b>Blisland Village Hall, 7.30pm</b>
31st May 2008	<b>Leedstown Village Hall, 7.30pm</b>
6th June 2008	<b>Warleggan Jubilee Hall, 7.30pm</b>
7th June 2008	<b>Golant Village Hall, 7.30pm</b>
13th June 2008	<b>Liskerrett Community Centre, Liskeard, 7.30pm</b>
20th June 2008	<b>Nancegollan Village Hall, 7.30pm</b>
21st June 2008	<b>Mevagissey Jubilee Hall, 7.30pm</b>
22nd June 2008	<b>The Lizard Community Hall, 7.30pm</b>
12th August 2008	<b>Bideford Folk Festival, Baptist Church, 7.30pm</b>
4th September 2008	<b>Dehwhelans Marquee, Looe, 8.00pm</b>

new ways of telling its fascinating stories. Through it we celebrate our ancestors' contribution to the foundations of the modern industrial world, and the cultural inheritance that they have bequeathed us. World Heritage status means that where we live has meaning and significance for all humanity - places and peoples that

should be cherished by all of us. We hope that these performances provide an insight into this amazing heritage."

To find out more, visit:

[www.lyngham.co.uk/cornishlads](http://www.lyngham.co.uk/cornishlads)

Our mining culture  
shaped your world

audiovoice

audiovoice is a programme of seven intensive workshop experiences based around song and creativity, for ten to twelve year olds to be held in seven different National Trust locations in Cornwall and west Devon, in school holidays and weekends from February 2008 to March 2009.



Children enjoying a recent audiovoice session at Botallack Mine, West Penwith

At each audiovoice workshop, participants work and sing with professional musicians in a whole range of ways over a period of two days. Sessions are led by celebrated national and international musicians and composers, from across a wide variety of musical genre ranging from those grounded in the black church, led by the all female group, Black Voices; harmonic traditional singing with Georgian Choir, Mtiebi; contemporary vocal looping techniques with Askew and Avis; traditional folk singing and song writing with Cornwall Songwriters; and song workshops led by English Touring Opera, to name but a few! Within sessions, children work together as a group to learn and create new pieces whilst engaging with the different musical traditions. The aim of the project is to offer children, at primary/secondary transition age, an immersive introduction to different singing traditions and to encourage new creative composition. All workshops are also supported by input from two Assistant Artists; local professional musicians whose own development is being nurtured by

observing and working alongside the Lead Artists, plus two trainee Youth Leaders.

'Mini concerts' will take place at the end of each workshop experience to share new singing traditions and styles as well as any new compositional work for an invited audience of parents and friends.

The audiovoice project has got off to an excellent start and the singing, song writing and music making that took place with Black Voices on the Lizard in February, and more recently with Cornwall Songwriters at Botallack, being very well received.

audiovoice builds on the success of the Cornish Carols project developed by Cornwall Arts Centre Trust (ACT) for the World Heritage Site Office in 2006, which involved forty schools in celebrating this particular aspect of their cultural heritage. The positive feedback from this was so strong that the organisers realised a more broad based exploration of choral singing

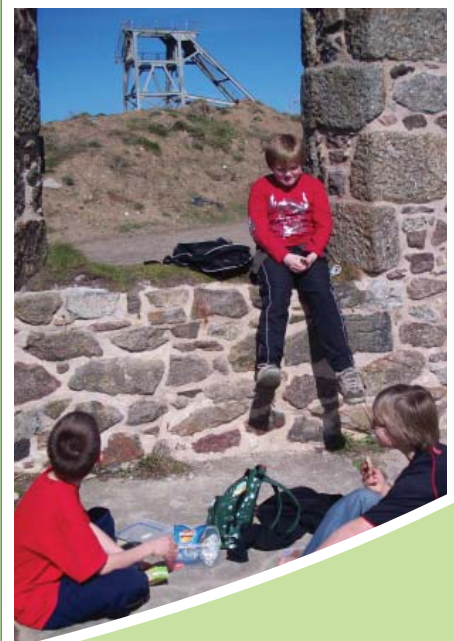
traditions would be popular with a wide educational audience. The Cornwall Music Service also recognises and supports audiovoice, appreciating its value to enrich students' experience of learning music, whatever their ability.

The next audiovoice project will be working with Mtiebi, a group of male singers and dancers from Georgia. This will be taking place on Saturday 28th and Sunday 29th June at Pill Farm, (Trelissick Gardens), near Feock, Truro.

A number of additional events including some with a jazz or opera focus are due to take place over the coming months.

Please contact Jude Page at Cornwall Arts Centre Trust for further details.

Email: [admin@actcornwall.org.uk](mailto:admin@actcornwall.org.uk). Tel (01209) 313200

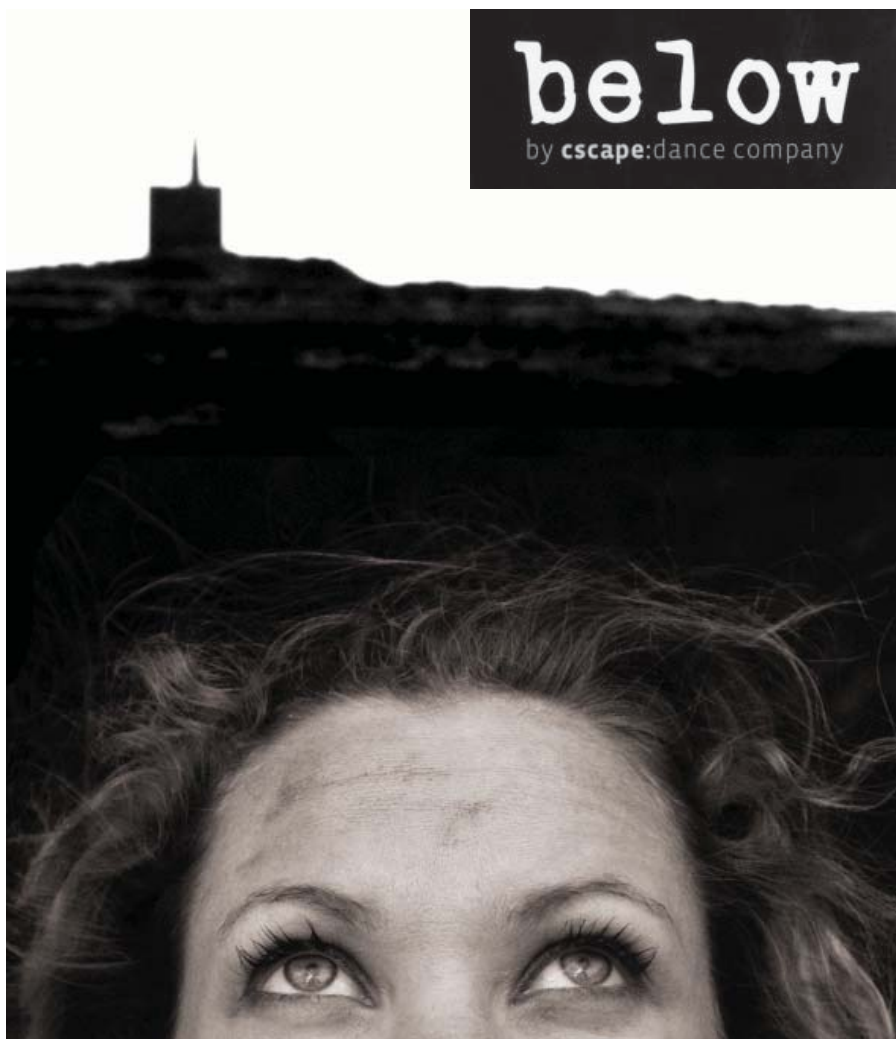


Our mining culture shaped your world



## Below

**M**arch and April 2008 saw renowned dance company cscscape perform 'below', a modern dance presentation based on a story by Anna Maria Murphy which explores the hidden depths of the Cornish mining industry, telling tales of life above and below ground. Using cscscape's own unique style of story telling - blending dance, physical theatre, music and film - 'below' is a performance of raw energy and sheer physicality.



'below' also showcases new works by T. C. Howard, Sally Williams and Helen Tiplady to create a moving and fascinating performance which harps back to an era of bal maidens, deep fathoms and faith, loss and the promise of new life.

**Cscape is known for a good sense of humour and making work that people in Cornwall can care about.**

'Below' is no exception, taking on the challenge of portraying Cornwall's distinctive heritage in a new and innovative way. Recent performances were very warmly received with the St Eval audience in particular hailing their April 1st show as "excellent - fantastic, entertaining, [and with an] intense ending".

For further information on cscscape's innovative work, please see: [www.cscscape.org.uk](http://www.cscscape.org.uk)

Our mining culture  
shaped your world



Holman's No.3 'saw-tooth' frontage alongside the main London to Penzance rail link

## Conservation

### Holman's No. 3 Rock Drill Works, Camborne: preserving Outstanding Universal Value within the Cornish Mining World Heritage Site

The Holman's No.3 Rock Drill Works is a primary mining ancillary industry site within Camborne, a key element of the Outstanding Universal Value (OUV) of the Cornish Mining World Heritage Site (WHS), and a manufactory whose highly-regarded products were sold the world over. It was compressed air rock drills from this works which were to hold a series of world drilling speed records in the early years of the twentieth-century; by 1907, a Holman's machine had held the title on no less than three occasions in South Africa (1904 and 1907 - twice), and once in Australia (1906). The industrial complex is a rare survivor from Camborne's heyday as a world-renown centre for the production of hard-rock mining machinery.

Since the closure of the No.3 Works in 1980 the site has been the focus of number of regeneration proposals none of which could successfully meet the many heritage conservation challenges posed. The current plans devised by Arrowcity Ltd and the architects Lilly Lewarne Practice to construct a mixed housing and flats development have been progressed over the last three years to the point where the interests of the WHS are clearly reflected in the scheme.



The impressive granite façade of the Holman's showroom building; rock-drills once graced the parapet of this imposing structure



Early twentieth-century 'saw-tooth' roofline surmounting mid nineteenth-century wall of the earlier Burgess Foundry



Reynold's House, site office for the foundry during the twentieth-century

Careful negotiations have resulted in a number of key WHS objectives being secured

- the preservation of all the historic buildings and retention of the site's OUV
- the retention of all the distinctive 'saw-tooth' external walls that define the boundary of the site and which enable it to be read as a discrete industrial landscape feature
- the design of the new-build houses and apartments has been influenced to ensure they are in-keeping with the industrial character of the site, thus retaining the lower site occupation density rather than inappropriately mimicking the surrounding high-density housing
- Cornwall County Council's HES Advice Team, acting on behalf of the WHS Office, have worked with the developer to commission a full recording programme for historic buildings and buried archaeology in advance of redevelopment as a PPG16 planning Condition

Our mining culture shaped your world

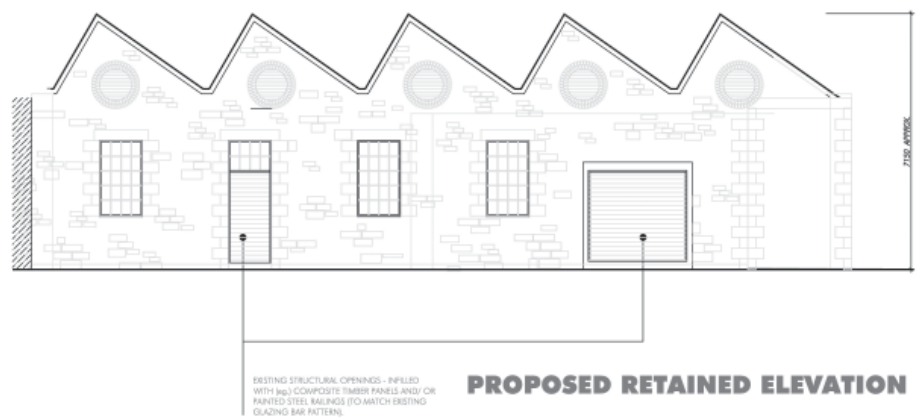


Example of new build which reflects well the site's industrial character through the use of 'saw-tooth' rooflines

The Cornish Mining WHS Office have supported the latest planning application and see this site as an exemplar of what can be achieved when discussions are instigated at an early stage between heritage agencies and developers. Deborah Boden, World Heritage Site Co-ordinator, commented

**“The developers, Arrowcity Ltd working with Lilly Lewarne Practice, are to be congratulated for responding positively to the distinctive character of this site and ensuring that this is retained within the development proposals.”**

All photographs: Eric Berry  
 © Cornwall County Council, 2006; used by permission. Excerpts from the development proposals for the Holman's No.3 site by kind permission of John Stengelhofen at Lilly Lewarne Practice



Early twentieth-century 'saw-tooth' roofline and mid nineteenth-century wall to be retained as key landscape feature within the site



**SOUTH-WEST ELEVATION: FROM STREET**  
 Reynold's House: a key feature of the foundry site being retained and sensitively adapted for residential use

Cover image: Michell's or North Whim, East Pool & Agar Mine

Please see the News & Press page for regular updates on World Heritage Site events:  
[www.cornishmining.org.uk](http://www.cornishmining.org.uk)

Our mining culture shaped your world