

THE

WINTER 2022

TRIBUTER

CORNWALL & WEST DEVON
MINING WORLD HERITAGE
SITE NEWSLETTER

ON THE GROUND

**TAVISTOCK GUILDHALL
BECOMES WORLD HERITAGE
SITE KEY CENTRE**

PLUS CONSERVATION IN THE
WORLD HERITAGE SITE
CORNWALL COUNCIL'S
HERITAGE ENVIRONMENT
PROGRAMME

FEATURE IN FOCUS
SPORTS AND
MINEWORKERS
IN CORNWALL



IN THIS ISSUE



03 Photo of the season – West Wheal Owles by Adam Sharpe

04 Message from the Team – The latest news from the World Heritage Site Team

06 Conservation in the World Heritage Site – Cornwall Council’s heritage environment programme

08 Delving deeper – We unearth the answers to your burning questions relating to the Cornwall and West Devon Mining Landscape World Heritage Site

10 On the ground - News from the Site – Tavistock Guildhall

14 Way Back When – Conservation at Consolidated Mines, Gwennap – 2012-2013

18 Feature in Focus – Sports and mineworkers in Cornwall

24 News from the Archives – Kresen Kernow

25 Events and Learning – New interpretation at South Binner Downs Mine



The Cornish Mining World Heritage Site,
5th Floor, Pydar House, Pydar Street,
Truro TR1 1XU

[www.cornishmining.org.uk](http://whc.unesco.org/en/list)

<http://whc.unesco.org/en/list>

We want to ensure your needs are met. If you would like this information in another format or language please contact us at the above address.

All content, unless where specified,
© Cornwall Council, 2022.

Photos Ainsley Cocks / Cornwall Council unless stated.

Cover image: The statue of Francis Russell, 7th Duke of Bedford, in Bedford Square, Tavistock (Ainsley Cocks)

© Cornwall Council 2022

Design Design Team, Cornwall Council

Design Concept Design79



**PHOTO OF
THE SEASON**

West Wheal Owles,
December 2010
Photo: Adam Sharpe

Message from the team

DEAR TRIBUTERS

Sally Weston, World Heritage Site Lead Officer

Having joined the team late in 2021 I've now seen the Site through a full year. It's been a steep learning curve on a personal level, one which is ongoing as I continue to learn more about the attributes of outstanding universal value around the Areas within the Site.

It's been a successful year for the World Heritage Site and our partner organisations. In September we jointly held the third Cornish Buildings Group Awards at Kresen Kernow. The awards recognise high quality new build and restoration work across Cornwall. The World Heritage awards are presented to those buildings located within the Site which reflect and enhance its mining heritage. This year also saw applications from the West Devon Area of the World Heritage Site with the newly revamped Tavistock Guildhall receiving an award.

Tavistock Guildhall has also been given Key Centre status. This sits alongside Heartlands and Geevor which act as focal locations for the World Heritage Site, providing information about the local area as well as signposting to the wider Site. The Guildhall has benefited from a project to repair, restore and convert the Guildhall and Magistrate's Court to bring them back to life. If you're in the Tavistock area, please visit and explore the eastern gateway to the World Heritage Site.

We have worked in partnership with schools in Tavistock, Camborne and St Just and Palores Productions to produce "Cornish Caretakers", an interactive online platform to help schoolchildren learn about their mining heritage – see more on our website, *Cornish Mining WHS - Virtual Tours*

Along with our fellow UK World Heritage Sites we are completing UNESCO's Periodic Reporting Cycle in late 2022/early 2023. This cyclical reporting process enables us to demonstrate how the Site is being looked after and made accessible.

I'm looking forward to continuing learning more about our World Heritage Site and contributing to its ongoing conservation and finding ways to make it accessible with our partners through 2023.

Sally Weston



CONSERVATION

IN THE WORLD HERITAGE SITE

ANSLEY COCKS



The Pascoe's Shaft Pumping Engine House in scaffolding during the recent conservation works

CONSERVATION IN THE WORLD HERITAGE SITE

Cornwall Council's heritage environment programme safeguards landmarks within the Cornwall and West Devon Mining Landscape World Heritage Site

Beady eyes exploring the Mineral Tramways routes through the World Heritage Site's Area A5 (Camborne and Redruth) may have spotted a few changes recently as an ongoing heritage structures project has been helping conserve many of the recognisable landmarks of the area, including the Miners' Dry building at Marriott's Shaft, South Wheal Frances, and at the time of writing (early summer 2022) work is ongoing on the pumping and whim (winding) engine houses at the nearby Pascoe's Shaft.

Although the primary driver for works has been public safety around these structures, a heritage conservation-led approach has been used to help ensure the longevity of these iconic buildings for future generations.

The Mineral Tramways routes form part of a heavily used network of former mining tramway routes now reused as multi-use trails. These trails mainly lie in the vicinity of Camborne and Redruth but also reach down to the coast at Portreath and Devoran. Our popular free Mining Trails leaflet shows the trail network and places to visit along the various routes. You can find the leaflet here: https://www.cornishmining.org.uk/media/pdfs/Mining_Trails_Map.pdf.



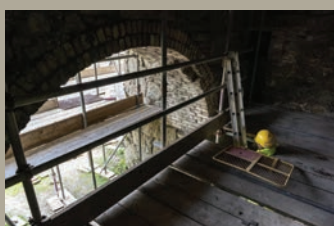
Above: Stack repairs at the Pascoe's Shaft Pumping Engine House

The conservation project is going above and beyond the works that may be required for health and safety needs by restoring period features. Working in collaboration with the Historic Environment Conservation Officer Colin Buck the requirements of the World Heritage Site designation are being met with regard to the correct use of materials and repair techniques. The Miners' Dry at South Wheal Frances, for example, has included various voussoir arch repairs, as well as the replacement stonework pillar in the north elevation.

At the Grade II Listed Pumping Engine House at Pascoe's Shaft, South Wheal Frances (pictured) various features are being conserved, including the engine driver's opening in the bob wall, known as the plug door, and the large opening in the rear wall, known as the cylinder arch. The building has untypically tall lancet windows - a rare feature in Cornish-type engine houses thought to improve the building's strength - and also a tapered cylindrical chimney with brick cornices to both stages.

The Pascoe's Shaft Pumping Engine House is one of two at this shaft site with the other being the nearby Pascoe's Shaft Whim, or winder, house. Cornish-type engines were commonly paired at mine shaft sites such as this with these fulfilling their individual functions with respect to the same shaft. The Pascoe's Shaft pumping engine is understood to have been installed on site as a second-hand machine in 1887 and had an 80-inch diameter steam cylinder. The adjacent whim engine had a smaller 30-inch diameter cylinder and these engines remained in operation for around 30 years until mining of the deep levels was suspended at Basset Mines, as the site was then known, in 1918.

“...WE ARE IN EFFECT PRESERVING A KEY ELEMENT OF OUR HERITAGE AND CULTURE IN CORNWALL.”



Top: Window arch brickwork below the engine house erection step; the latter was used to locate the heavy timbers required to haul the engine beam into position during installation

Above: The engine house cylinder arch opening, sized to accommodate the diameter of the engine steam cylinder

Recognising the international importance of the engine houses and the deep meaning attached to these landmarks, Project Manager Richard Keast (CORMAC) said, “Everyone involved in this programme, from the management and design teams to the workforce, have been highly enthused about it, as we are in effect preserving a key element of our heritage and culture in Cornwall.”

South Wheal Frances is located at one of the gateways to the Great Flat Lode Trail; situated near Treskillard, there is a free carpark and access along the multi-use trail, where you can find numerous beauty points to stop to take in panoramic views out to Penwith and the north coast. Points of interest along the route are not just from the mining era, but across the rich history landscape and its people – scramble over the stone ramparts of the Neolithic settlement on Carn Brea, which most people don’t realise is possibly one of the oldest in Britain, look out for the white cross at Whitcross and pop into Heartlands to enjoy the Red River Café and Diaspora Gardens.

Structural inspections have also been carried out recently on former mine buildings at Dolcoath, Wheal Basset Stamps, Newton Moor, South Tincroft, Wheal Uny and at the Williams Shaft site, to inform a programme of works over the next 4-5 years, subject to Cornwall Council securing the required funding.

To find out how to explore the Mining Trails visit: <https://www.cornwalltrails.net/>

Find out about facilities and events at Heartlands here: <https://www.heartlandscornwall.com/>

Charlotte Evans
Cornwall Council Environment Project Adviser



Below: CORMAC Works Supervisor Mike Hadfield with the World Heritage Site’s Emma Parkman, atop the engine house scaffolding during a site visit in April



ANSLEY COOKS

Questions for the Team

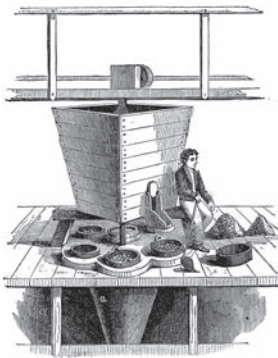
DELVING DEEPER

In this section we encourage you to send in your burning questions relating to the Cornwall and West Devon Mining Landscape World Heritage Site. The team will then select 3 questions and unearth the answers for you in each edition of the newsletter.



DID CHILDREN WORK IN THE MINES?

Yes, and until the 1840s there were no regulations or laws in place in Britain to prevent very young children working at mines either underground or at surface. Concerns expressed nationally during the second quarter of the nineteenth century, however, led to questions in parliament and finally the Children's Employment Commission was convened by Royal assent to investigate working conditions in mines, both coal and metalliferous. The resulting multi-volume study, 'Children's Employment (Mines)', was published as a British Parliamentary Paper, in 1842. Later that year an Act was introduced which addressed the issue; the 'Mines and Collieries Act', passed in August, forbade any female, and any child below the age of ten, from working underground in mines.



Above: Boy tending a copper ore jigging machine at Fowey Consols Mine – Saturday Magazine, 1 February 1834



WHAT DOES UNESCO WORLD HERITAGE SITE STATUS MEAN?

UNESCO, or the United Nations Educational Scientific and Cultural Organisation, is a specialised agency of the United Nations aimed at promoting world peace and security through international cooperation in education, arts, sciences and culture. It has 193 member states and 12 associate members and is headquartered at the World Heritage Centre in Paris. UNESCO has 53 regional field offices and 199 national commissions that facilitate its global mandate. World Heritage is the designation for places

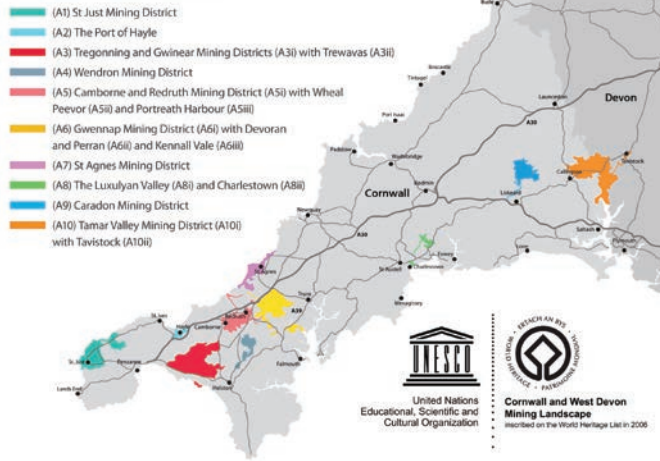
on Earth that are of Outstanding Universal Value to humanity and, as such, have been inscribed on the World Heritage List to be protected for future generations to appreciate and enjoy.

Our mining landscapes have been given World Heritage Site status due to the contribution Cornish mining made towards enabling the Industrial Revolution in Britain. To learn more about our status, visit our website here: <https://www.cornishmining.org.uk/about/about-the-whs/what-is-a-whs>.



A Framing Girl, or Racker, in Tin Mine.

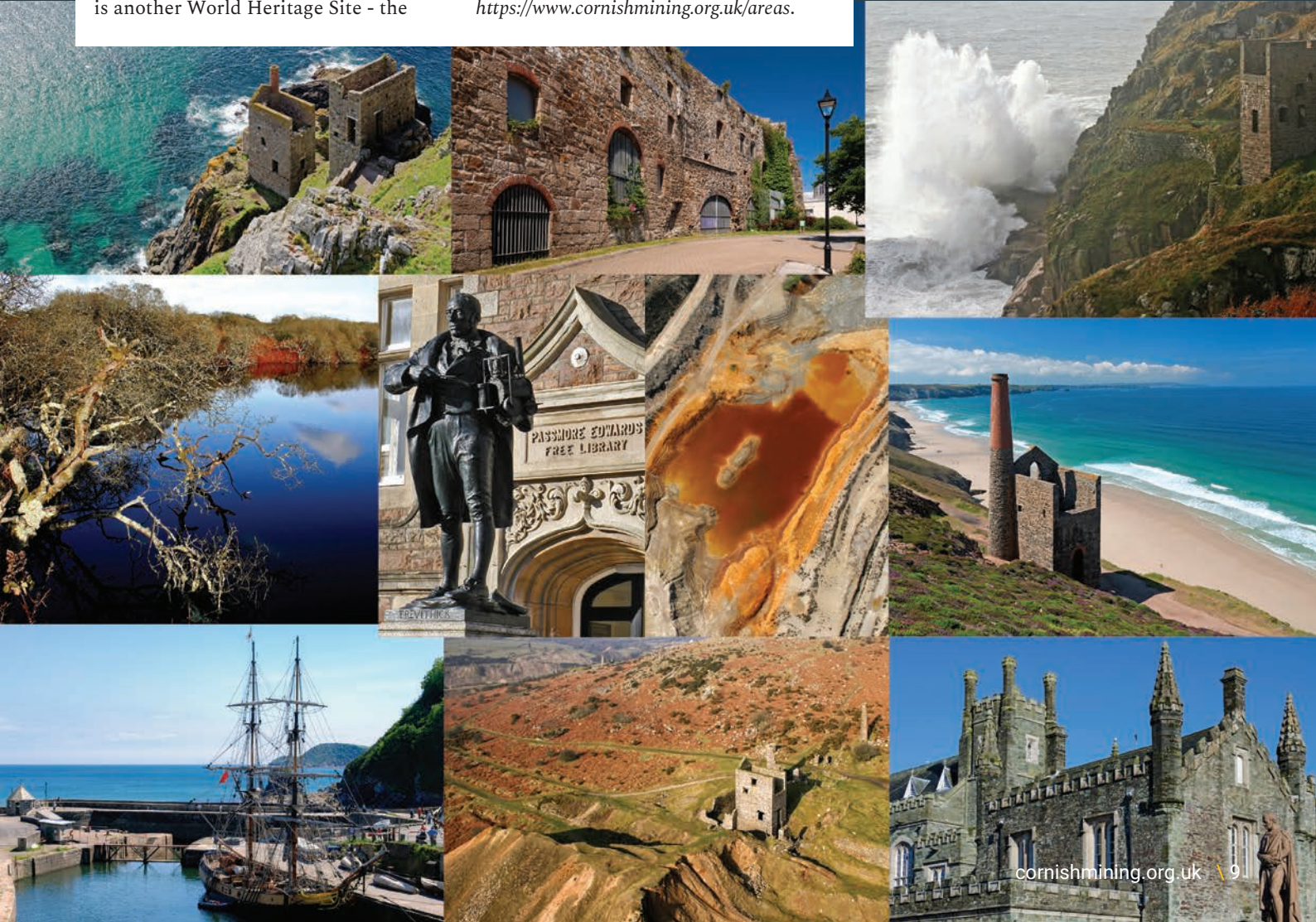
World Heritage Site Areas



HOW MANY WORLD HERITAGE SITES ARE THERE IN CORNWALL?

There are ten World Heritage Site Areas which together make up our one Cornwall and West Devon Mining Landscape World Heritage Site. In Cornwall we have only the one World Heritage Site however in Devon, where Area A10 'The Tamar Valley Mining District with Tavistock' lies, there is another World Heritage Site - the

Dorset and East Devon Coast, better known as the Jurassic Coast. Tavistock is Devon's only World Heritage Site town however as there are no such settlements within the Jurassic Coast Site. The ten Areas of the Cornwall and West Devon Mining Landscape World Heritage Site can be seen here: <https://www.cornishmining.org.uk/areas>.

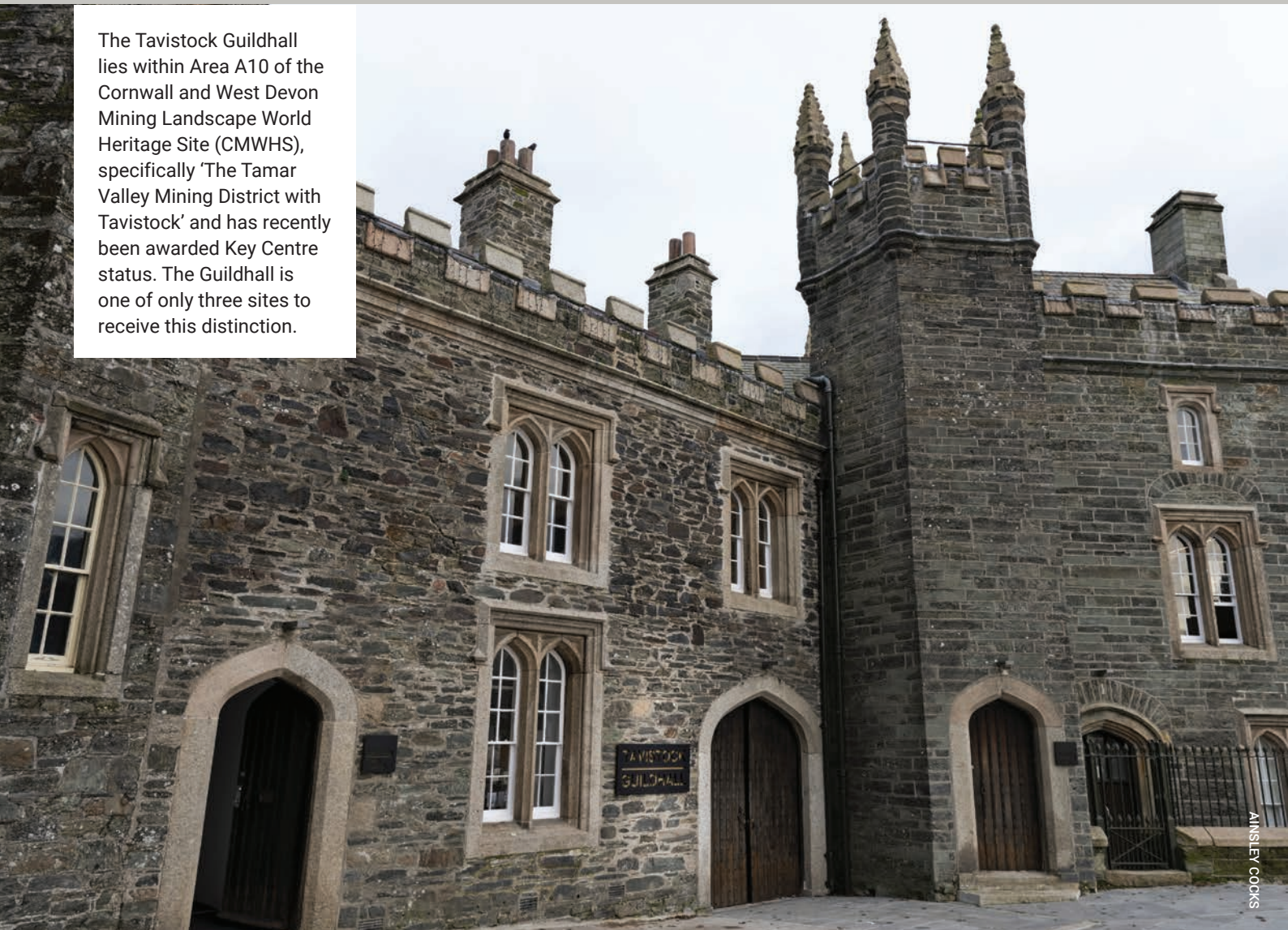


On the Ground

TAVISTOCK GUILDHALL

RECEIVES WORLD HERITAGE SITE KEY CENTRE STATUS

The Tavistock Guildhall lies within Area A10 of the Cornwall and West Devon Mining Landscape World Heritage Site (CMWHS), specifically 'The Tamar Valley Mining District with Tavistock' and has recently been awarded Key Centre status. The Guildhall is one of only three sites to receive this distinction.





Right: The conserved prisoner cells within the Guildhall

The Guildhall is a Grade II* Listed building and has recently undergone extensive renovation to conserve and restore its historic structure and form, thanks to grants from a number of funders including the National Lottery Heritage Fund, Tavistock Town Council, and the CMWHS Partnership. The renovations have included an extensive overhaul of the visitor facilities, resulting in a brand-new immersive range of interpretation covering the building and the surrounding areas' mining history, the development of the town, crime and punishment, its connections with Dartmoor and much more. The building has also been upgraded with the addition of lifts and accessible entrances, allowing greater access for all members of the public.

The CMWHS Partnership Board decided to award Key Centre status to the Guildhall following an assessment to determine its ability to meet the aims set out within our World Heritage Site interpretation strategy. There are three Key Centres located across the Site - Tavistock Guildhall in the east, Heartlands (or Robinson's Shaft, South Crofty) in the middle and Geevor Mine in the west. The Key Centres are gateways into other Areas of the World Heritage Site and provide information and interpretation to support discovery and understanding by residents and visitors alike. These offer a network of local facilities, features and events that relate to specific or local aspects of mining heritage as well as signposting to the wider Site.

The new interpretation and renovations allow the Tavistock Guildhall to tell not only its own fascinating story, but also that of the wider A10 Area of the World Heritage Site and the Areas beyond.

You can learn about Area A10 of the World Heritage Site here;

<https://www.cornishmining.org.uk/areas/tamar-valley-mining-district-with-tavistock>

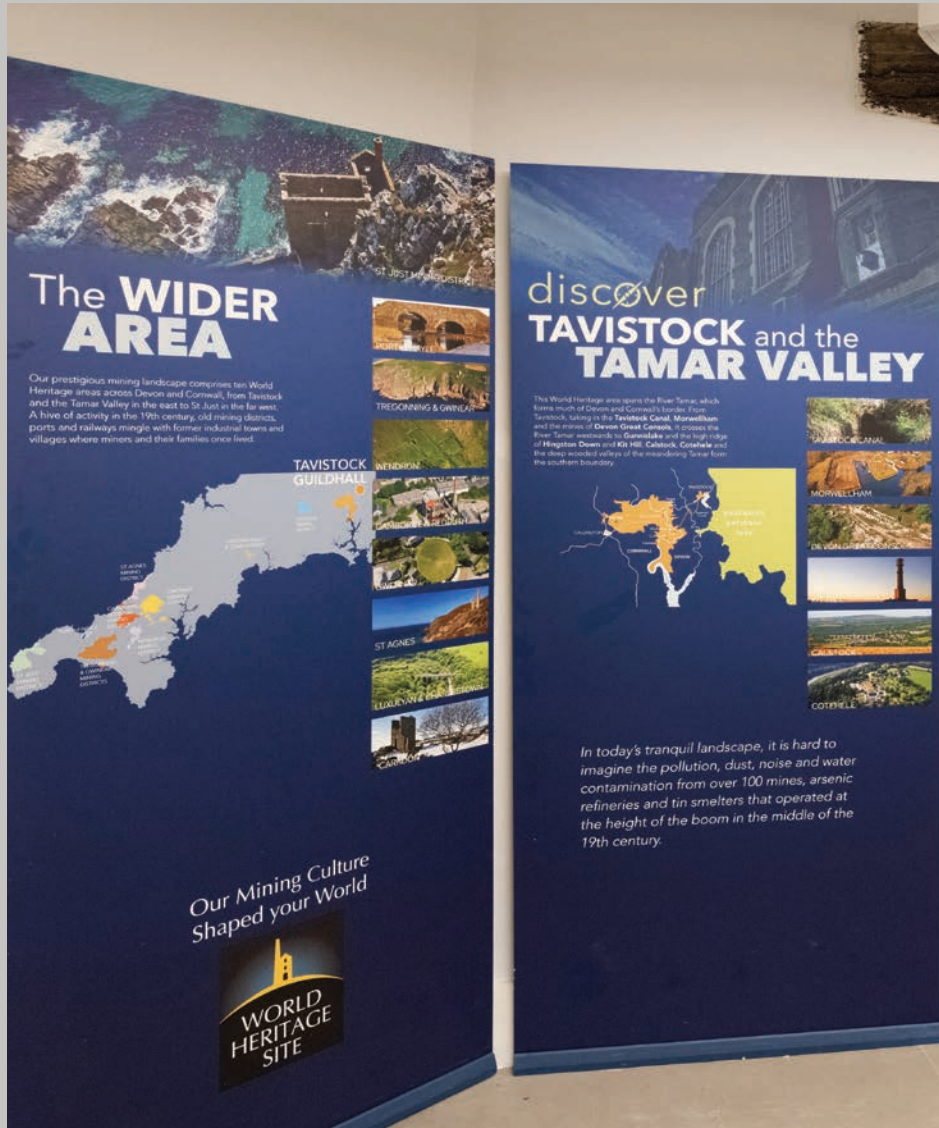
The Guildhall opening times and visiting information can be found here;

<https://tavistockguildhall.org/>



Above: Some of the new interpretation within the Guildhall

Right: Interpretation introducing the World Heritage Site and the Tamar Valley Mining District



Below left: The refurbished Court Room

Below right: Introducing Devon Great Consols - Devon's Greatest Copper Mine



Below left and right: Views around the Guildhall



Above: The Chairman of the World Heritage Site Partnership Board, Dave Crabtree, and other elected Members during the presentation of the Key Centre plaque to Dr Geri Parlby, Chairman of Tavistock Heritage Trust

Conservation at Consolidated Mines,
Gwennap - 2012-2013

WAY BACK WHEN



CORNWALL COUNCIL

Above: The Wheal Maid Valley and Consolidated Mines, 2009

In the winter of 2012, the World Heritage Site team was looking ahead to the proposed conservation of buildings at Consolidated Mines in the Wheal Maid Valley, near Crofthandy, and here we take a look back at some of what was involved.

Structures at the Taylor's and Davey's Shaft sites at Consolidated Mines, owned by Gwennap Parish Council, became eligible for conservation, with all works to be externally funded by the Department for Environment, Food & Rural Affairs (DEFRA) and administered by Natural England as part of its Higher-Level Stewardship (HLS) scheme, the project was eventually to receive 100 per cent grant funding for all the consolidation works.

The mechanics of the HLS scheme required site owners to initially fund conservation works and to reclaim these costs periodically from Natural England. This process was to prove to be not possible for the site owners Gwennap Parish Council, but fortunately the Cornwall Council Economic Development team and the Environment Directorate were able to grant a temporary cash flow bridging loan. This enabled Gwennap Parish Council to deliver the works in partnership with Natural England as initially planned.

A total of £270,000 was finally committed for the site works by Natural England, and the project management consultancy PDP Green of Truro was appointed through tender to oversee project delivery. The works were undertaken by the conservation builders Darrock & Brown Ltd. (now Heritage Cornwall Ltd.) and their considerable experience in the sensitive restoration of historic structures was to prove invaluable. The archaeological supervision for the project was provided by Adam Sharpe, Senior Archaeologist with the Historic Environment department of Cornwall Council, and his guidance was instrumental in delivering the best possible heritage outcomes.

The project is also indebted to Gwennap Parish Council representatives Kevin Furnish (Chairman), Ray Humble (Vice Chairman), and Alan Blamey (Clerk to the Council), who were to prove to be totally supportive from the outset.

Work commenced on site in the Wheal Maid Valley in the January of 2013 and all works were completed by the end of August, well in advance of the estimated completion deadline of March 2014. The resultant conservation was of a very high standard and a credit to all the partners involved. The World Heritage Site Partnership reiterates its thanks to David Hazlehurst at Natural England, Cornwall Council Senior Archaeologists Ann Reynolds and Adam Sharpe, and to all at Gwennap Parish Council, PDP Green, and Darrock & Brown Ltd., for their commitment to the project, and for together delivering such a high standard of conservation work.

Ainsley Cocks



Below: The remains of Davey's Whim Engine House after conservation



AINSLEY COCKS



TOBY LOWE

Above: Members of the conservation project team in front of the Taylor's Shaft Pumping Engine House in 2013



Top: The Taylor's Shaft Pumping Engine House and boiler chimney following conservation

Above: Senior Archaeologist Adam Sharpe inspects the works at the Davey's Whim Engine House with staff of Darrock & Brown Ltd.

Right: The Consolidated Mines buildings prior to conservation in 2009





Feature in Focus

SPORTS AND MINEWORKERS IN CORNWALL



Above: Pendeen Rovers Reserves, 1948-49

A MINER'S WORK HAS ALWAYS BEEN HARD, SO IT IS NOT SURPRISING WITH THE PRESSURES OF WORK AND HOME LIFE THAT THEY ALSO PLAYED HARD.

Historically there has been a preference within working-class mining communities to favour sports requiring physical strength, teamwork, and perhaps less cost to participate in than may be the case with other pastimes. The inherent physical strength of mineworkers in combination with the strong ties present within industrial communities made Cornish miners ideally suited to sports such as football and rugby.

A miner's work has always been hard, so it is not surprising with the pressures of work and home life that they also played hard. Throughout mining communities in Cornwall, football, rugby and Cornish wrestling were all pursued. These were community gatherings with mineworkers and their families coming out to watch and they retain their community focus today. Friendly rivalry also plays its part when different villages and towns come together to play one another. Redruth and Camborne take turns to host the annual men's rugby match on Boxing Day, which continues to be a major local event attracting around 1,500 supporters every Christmas. Rugby could be said to rival if not exceed football in Cornwall in terms of the numbers of players and attending supporters.

These pursuits also did not just stay within Cornwall but were transferred around the globe in the nineteenth century as mineworkers migrated for work, impacting on the development of sports world-wide. Migrant mineworkers kept their favourite sports alive, introducing them to resident populations and setting up leagues and teams that in some places still exist today. Wrestling in California, rugby in Australia and South Africa, and football in Mexico have all been influenced by travelling Cornish miners.



Right: Geevor Mine



Above: Geevor All Stars Eleven, 1969

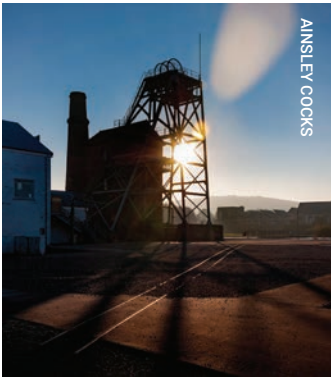
RUGBY

Today much like with other Celtic communities such as Scotland and Wales, rugby is a firm favourite in Cornwall. The Cornwall Rugby Football Union (CRFU) was formed in 1883 and the Cornish rugby team won an Olympic silver medal in 1908, after securing the chance to represent England following their win at the County Championships. Both Geevor Mine at Pendeen and South Crofty Mine at Pool had rugby teams who would compete against each other in often what were reported to be 'spirited' matches, to say the least.

Some rugby playing nations with international acclaim have been impacted historically by Cornish mineworkers. When travelling to Australia, New Zealand and South Africa, Cornish migrants introduced the sport to the areas they settled and so the sport developed. Teams from all three of these countries played in Cornwall in the early twentieth century.

We were lucky enough to speak to Steve Howis, a Geevor miner, recently who still works at Geevor as a Guide. He played rugby for Geevor during the inter-mine cup matches which also included South Crofty, Wheal Jane at Baldhu, Pendarvis Mine near Barrripper, and Geevor, in the 1970s. There was not much pre training

THEY WOULD SING SONGS SUCH AS ‘MY CORNWALL’ AND DRINK TOGETHER, HAVING SMASHED INTO EACH OTHER JUST METRES AWAY NOT LONG BEFORE.



Above: Robinson’s Shaft, South Crofty Mine

Below right: Cornish mining wrestler Sam Ham and the trophy he won whilst in South Africa, in around 1910.

involved with many miners playing rugby for local clubs in their towns and villages and with some amateur players just turning up on the day. Steve himself played for the Penzance Pirates at the time, who were then an amateur team. The games were extremely competitive with senior management often coming to watch. There were many funny stories of teams winding each other up and messing about on the pitch, not all of them printable. However, much like the rugby of today, no matter what happened on the pitch there was a hot pasty and a friendly drink in the clubhouse waiting for everyone afterwards. They would sing songs such as ‘My Cornwall’ and drink together, having smashed into each other just metres away not long before. Rugby gave the miners a way to blow off steam, socialise with their own and those of other mines and strengthen the bond between workers who had an extremely pressured and strenuous job.

Today the Cornish Mining World Heritage Site team still keeps the mining and rugby connection with one of our team members playing rugby for Camborne ladies’ team as the women’s sport grows alongside the men’s in Cornwall.



Above: Wrestlers Sam Ham and T. Pearce posing for a studio photographer in Redruth

CORNISH WRESTLING

Cornish wrestling has been practised for centuries. In Cornish dialect, it is known as ‘wrasslin’ and is one of the oldest sports still practiced in Cornwall. In 1923, the Cornish Wrestling Association was formed to help create a standard set of rules and promote it worldwide. It is quite different to other forms of wrestling, such as that of the World Wrestling Federation (WWF). Wrestlers wear tough jackets which help them grip their opponent more easily – and all holds have to be taken on the other wrestler’s jacket. Holding below the waist, or grabbing fingers or wrists is not allowed. The objective is to throw your opponent and land him as flat as possible on his back. There is a complicated scoring system, which is administered by three ‘sticklers’, or referees.

In 2009, the World Heritage Site team had its own experience with Cornish wrestling when a trophy was unearthed by CORMAC personnel undertaking ground works in Tuckingmill. Research undertaken by the team revealed that the trophy was won by Cornish miner Sam Ham whilst working in South Africa. Sam was one of thousands of Cornish mineworkers who



Above: Tug of War contest at Geevor Tin Mine

worked on the South African Rand during the early 1900s, taking the opportunity to earn higher wages. The World Heritage Site team were able to eventually reunite the trophy with the descendants of Sam, the Butler family, and Paul Richards, the CORMAC employee who discovered the trophy, presented this on behalf of Cornwall Council and the World Heritage Site at an event at the Cornwall Centre in March 2010.

Cornish wrestling today takes place all over the world and was one of the distinctive cultural traditions exported to mining areas across the globe during the nineteenth to early twentieth centuries. Wherever the mineworkers went, they took wrestling with them – just as they did with traditional food like Cornish pasties. It is still widely practiced and popular in Victoria, Australia, and Grass Valley, California. In Grass Valley, Cornish wrestling competitions form part of their St Piran’s Day celebrations.

FOOTBALL

Cornwall also has strong links with Mexico, with the silver mining settlements of Pachuca and Real del Monte now referred to as Mexico’s ‘Little Cornwall’.

While the miners introduced a variety of sports, it was football that made the most impact there in the early twentieth century; local workers soon developed a passion for El Fútbol. Cornish miners were the driving force behind Mexico’s first football club, the Real del Monte Pachuca Athletic Club in the early 1900s.

TUG OF WAR

When down at Geevor speaking with former miner Steve Howis, he described the tough Geevor tug of war training which included pulling the coach’s personal Land Rover 4x4 up the hill at the mine. A training tactic that would no doubt not be used in today’s sports training! Steve spoke about how seriously tug of war was taken and that it was likely the most important and hotly contested sport for miners. Much skill and technique were required and particularly the ratchet-style technique needed to win, not just the miner’s obvious physical strength.



Above: Pendeen Rovers AFC 1938-39



Above: Geevor Mine, 2007



AINSLY COCKS

Right: South Crofty Mine, 2007

KARATE

Karate might not be something most people associate with Cornwall or Cornish miners, however we were lucky enough to speak with Robin Whale a former miner who has been involved in Karate since it was introduced in Cornwall.

In the late 1960s the first Cornish karate club opened in Illogan. Being based in the heart of Cornish mining country and the Central Mining District it was inevitable that some local miners would try out this new activity. Robin started his training in Wado-Ryu karate in 1969 and after several breaks managed to get his black belt in 1979.

1970 saw Robin's first introduction to mining when he worked briefly at Wheal Jane as a surveyor's assistant before signing on at South Crofty as an O/C man (Off-contract labourer). He soon became as a shaftman at Robinson's Shaft but left after a couple of years to train as a welder. There was a paucity of welding work locally and it wasn't well paid, so Robin ended up back underground at Mount Wellington Mine near Twelveheads.

Robin worked at Mount Wellington for two years along with two of his karate instructors Dave and Jim Cooper (who both won several national titles) until it closed in 1991. They worked together putting up raises between the levels while Robin was a trammer moving the muck from stope to ore pass, getting occasional experience using a stoper and jack-leg drill and managing to get his shot firer's certificate. Also, in the karate dojo (training hall) at that time was Dudley Stevens and Giuseppe (Jo) Amenta, both black belts and miners at South Crofty.

When Mount Wellington closed many of Robin's crew went to Concorde Mine near Blackwater, but Robin opted to try his hand at Geevor. Robin was part of a small crew sinking an extension to one of the shafts. After a while as spare machine man he was given his own contract, developing drives and cross cuts and, eventually, became the team leader of a shaft sinking crew extending the Sub-Incline Drive from 19 Level to below the 21 Level. As Team Leader, Robin was a member of management and responsible for health and safety and completing all the Mines and Quarries Act (1954) legal documentation.

During his time at Geevor he opened up a karate club in Penzance where he progressed through a couple of higher belt levels getting a 3rd Dan (degree) Black Belt. One of Robin's students was Ken, an ex-Geevor man who had lost his lower leg in a mining accident. Despite his disability he trained for several years and passed his karate belt exams compensating for his lack of mobility with rock hard miner's fists.

In 1992 a group of local instructors left their national governing body and formed the Sandokai (School of Three Ways) Karate Association. As the most senior black belt of the group, Robin became the Chief Instructor - a position he still holds.

After Geevor closed Robin worked to gain a degree in Psychology and taught this at A-Level at Cornwall College. In the early 2000s he returned to South Crofty, initially combining his time doing some development and maintenance work with taking visitors for tours of the workings. As things picked up and work on the Tuckingmill Decline progressed,



ADAM SHARPE

Above: Mount Wellington Mine

Robin helped train a new generation of miners, becoming the night shift supervisor, and was promoted to Safety and Training Officer. Robin queried his new role saying, “what do I know about safety?” and was told “you’ve been mining for nearly 40 years, and you are still alive!”.

When South Crofty went into administration and most of the workforce were laid off in 1998 Robin ended up working in Care. He is using his Psychology degree working almost exclusively with clients with a variety of mental health issues whom he says, “seem to enjoy my tales of life underground”.

Robin’s final comment was “my karate has continued to this day, and I now hold the rank of 8th Dan Black Belt and, as long as I am physically and mentally capable of doing so, I have no intention of stopping any time soon. Even though I am now 69 years old (in 2022) my karate has kept me relatively fit and healthy and if I got the call, I would be back underground in a second.”

Below: New Cook’s Shaft Headframe, South Crofty Mine, 2007

THE INTERNATIONAL MINING GAMES

The International Mining Games were created by the American Mining Schools in 1978, to commemorate the miners lost in the 1972 Sunshine Mine disaster in Kellogg, Idaho.

The Games are dedicated to all miners who have lost their lives in the course of their duty. They aim to keep traditional mining methods (many of which were developed in Cornwall and date back to the seventeenth century) alive. Events include track laying, tramming, hand drilling, surveying and gold panning.

Now an annual event, the Games attract competitors from mining schools all over the globe and are hosted by a different country each year. In 2018, the 40th International Mining Games were held in Cornwall, at King Edward Mine in Troon near Camborne.

With many thanks to Clint Hosking, Education Manager at Geevor Mine, Steve Howis, Robin Whale, Adrian Smith and all the other mineworkers who helped with their fantastic stories and comments on the sporting miners’ heritage of Cornwall.

Emma Parkman



News from the archives-

KRESEN KERNOW



This September it was three years since Kresen Kernow opened its doors. This also marks the end of our seven-year National Lottery Heritage Fund programme of exhibitions, events and activities, which has connected thousands of people with our amazing collections. As we reflect on what we've achieved, we want to say a heartfelt thank you to everyone who has supported our work, in Cornwall and across the world.



Above: Habitats exhibition in treasures gallery

Our final funded programme of the project focused on Cornwall's beautiful and fragile natural environment. Artists and environmentalists Jane Darke and Andrew Tebbs curated a series of workshops, film showings and activities to complement their stunning 'Habitats as Heritage' exhibition. From talks by biologists to making photos out of plant juice, we've loved the engaging ways they have inspired people to observe, record and conserve the diversity of wildlife on our doorstep.

Looking to the future, we have been developing new ideas and were delighted to receive funding from Historic England's Everyday Heritage Grants for our project 'A Cornish Camera, Bodmin at Work', along with 'IntoBodmin'. This project will connect local communities with the working-class histories of Bodmin using previously unseen photographs from the George Ellis Collection. You can find out more about this remarkable resource on our website, as well as a small digital exhibition on the ground floor at Kresen Kernow.

Our new gallery exhibition is called 'Wrecks and Rescues' and features recently acquired images of the Torey Canyon wreck in 1967, along with stories of dramatic wrecks and rescues off the coast of Cornwall. The exhibition runs until the end of 2022.

RECENT ACQUISITIONS

The former Poet Laureate John Betjeman (1906-1984), inspired by boyhood holiday railway journeys from Waterloo to Padstow, talked of North Cornwall villages populated by Bible Christians. A recent large deposit of records from the Camelford and Week St Mary Methodist Circuit included a fine Week St Mary Bible Christian Circuit plan of 1886 (MRCWM/9) highlighting its then thirteen preaching places with biblical names at Week St Mary, Canworthy Water, Salem Maxworthy, Rehoboth Tresmeer, Bethel Treneglos,

Eden Jacobstow, Siloam Boyton, Providence Altarnun, Zoar Coldnorthcott, Tresparrett, Ebenezer Poundstock, Tremayna St Gennys and Pencoke. There were 41 preachers on the plan, including Sister M Bridgman of Tresparrett. The document is illustrative of the all-but vanished religious and social history of this staunchly Nonconformist and Liberal voting area, whose chapels once served legendary Anniversary and Tea Treat teas to large numbers of adherents.

New additions to the library include the books entered in Gorsedh Kernow's Holyer an Gof Awards for this year. Around 70 books were entered in the 14 categories and copies of each title have been donated to Kresen Kernow. We are busy cataloguing them and the full list of entries can be seen online at [BooksReceivedFrom2021.pdf](https://booksreceivedfrom2021.pdf) (gorsedhkernow.org.uk). The awards celebrate books published about Cornwall or in the Cornish Language and are divided into fourteen categories, along with a number of special awards. Cup winning entries this year are:

Oyster Shore by Ruth Saberton and published by Millington and From 'Lady Woodcarvers' to professionals: the remarkable Pinwill sisters by Helen Wilson and published by Willow Productions.

(Ed. - The World Heritage Site team were delighted to win the Gorsedh Kernow Holyer an Gof Award for the category Non-fiction - Science, Environment and Industrial / Marine, in 2019, for our official guide to the World Heritage Site - <https://gorsedhkernow.org.uk/11-7-19-holyer-an-gof-2019-awards-winners-announced/>)

Tamsin Mallett

Collections and Development Manager,
Kresen Kernow



New interpretation at
South Binner Downs Mine

EVENTS AND LEARNING

Cornwall Council owns many heritage sites and features across Cornwall including former metalliferous mine sites such as the Great Flat Lode mines south of Camborne. Another of these, though perhaps lesser known, is the site of South Binner Downs Mine, a major eighteenth and nineteenth century copper producer near Leedstown in west Cornwall. South Binner Downs Mine is also part of the Cornwall and West Devon Mining Landscape World Heritage Site and specifically Area A3 – the Tregonning and Gwinear Mining Districts with Trewavas.

SOUTH BINNER DOWNS MINE.

Welcome to South Binner Downs Mine - part of the Cornwall and West Devon Mining Landscape World Heritage Site.

Binner Downs is part of a group of historic copper mines in the Leedstown area which includes Crenver and Wheal Abraham to the east, Wheal Strawberry to the south, Wheal Treasury to the north, and Wheal Gooseberry to the west. Binner Downs was known as a major copper ore producer by 1758, the date of its first known documentary reference. Binner Downs comprised two mine setts - North Mine and South (Binner Downs) Mine.

South Binner Downs is understood to have been in operation into the nineteenth century, with its last period of working from 1819 until closure in 1838. The mine had reached a depth in excess of 185 fathoms (338m) by this time and had six steam engines in operation along with a workforce of 390.

A total of 51,056 tons of copper ore is known to have been sold between 1819 and 1837, and records indicate a further 18 tons were sold in 1855 - possibly obtained through small-scale working of the shallow ground above the drainage adit.

MINE SECTION PLAN
The updated mine section plan shows the site in the first half of the nineteenth century and conveys something of how it would have appeared at surface. Numerous steam beam engines, horse whims and other shaft-head equipment can be seen along the east-west strike (direction) of the mineral lode. The Account House - or mine office - can also be seen to the left and near the shaft of the same name. Also shown are the many shafts and interconnecting levels (tunnels), while the shaded areas indicate slopes where the mineral sites have been removed.

THE LANDSCAPE OF SOUTH BINNER DOWNS
The landscape of the mine is characterised by extensive mine waste burrows and has been largely reclaimed by nature since its closure. This has created a rich and distinctive wildlife habitat with an ecology representative of abandoned mine workings across the World Heritage Site. Heather, gorse, bracken and willow scrub are in abundance as are moss and lichen. The shallow ponds on-site also support species of aquatic plants and animals.

BY 1838 THE MINE REACHED A DEPTH IN EXCESS OF 185 FATHOMS (338m)

The South Binner Downs Mine site is owned by Cornwall Council and managed as a space for the public to enjoy. Please follow the Countryside Code - respect everyone, protect the environment, and enjoy the outdoors. Please note that motorcycles and other vehicles are not permitted on site and do take all litter home with you. Always keep dogs under control and in sight.

For further information on the World Heritage Site, Cornwall Council, Crowan Parish Council, or the Countryside Code, please visit the websites below.

www.cornishmining.org.uk www.cornwall.gov.uk/environment www.crowan-pc.gov.uk www.gov.uk (search: countryside code)

CORNWALL MINING
CORNWALL COUNCIL
CORNWALL PARTNERSHIP BOARD

This panel has been set funded by Crowan Parish Council, Cornwall Council, and the World Heritage Site Partnership Board. The extracts from the abandoned mine plans E004 214/16 and E02204-4 are reproduced by kind permission of Robert Kenyon.

The completed interpretation panel design courtesy of Dave Taylor, Cornwall Council Design Team Lead

South Binner Downs is part of the wider Binner Downs mining area which formerly comprised a group of historic copper mines including Crenver and Wheal Abraham to the east, Wheal Strawberry to the south, Wheal Treasury to the north, and Wheal Gooseberry to the west. Binner Downs is recorded as a major copper mine by 1758, the date of its first known documentary reference, and comprised two adjoining mine setts - North Mine and South (Binner Downs) Mine.

South Binner Downs is understood to have been in operation into the nineteenth century, with its last period of working from 1819 until closure in 1838. The mine had reached a depth in excess of 185 fathoms (338m) by this time and had six steam engines in operation along with

a workforce of 390. A total of 51,056 tons of copper ore is known to have been sold between 1819 and 1837, and records indicate a further 18 tons were sold in 1855 - possibly obtained through small-scale working of the shallow ground above the drainage adit.

Today the landscape of the mine is characterised by extensive mine waste burrows and has been largely reclaimed by nature since its closure. This has created a rich and distinctive wildlife habitat with an ecology representative of abandoned mine workings across the World Heritage Site. Heather, gorse, bracken and willow scrub are in abundance as are moss and lichen. The shallow ponds on-site also support species of aquatic plants, animals and insects.

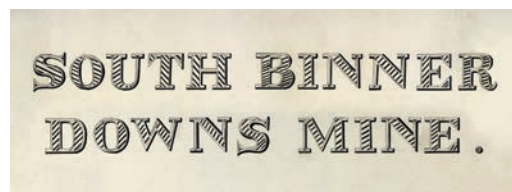
The South Binner Downs Mine site is managed by Cornwall Council as a space for the public to enjoy and it is hoped the new panel will aid the understanding and appreciation of the site as part of our internationally important World Heritage landscape. Crowan Parish Council and Cornwall Councillor Loveday Jenkin are thanked for their generous contributions which helped make the new panel possible.

The extracts from the two abandoned mine plans DDH 214/16 and AD220-4 used in the design of the panel and reproduced here are used by kind permission of Kresen Kernow, Redruth.

Ainsley Cocks



AINSLEY COCKS



Top: The mantle of mine waste at South Binner Downs now largely reclaimed by nature.

Above: The hand drawn title of the South Binner Downs Mine Plan AD220-4, held in the archives of Kresen Kernow, Redruth

Below: The new panel in situ at the entrance to the South Binner Downs Mine site



SOUTH BINNER DOWNS MINE.

Welcome to South Binner Downs Mine - part of the Cornwall and West Devon Mining Landscape World Heritage Site.

Binner Downs is part of a group of historic copper mines in the Laccadine area which, with the Cornish and Wheal Adair mines to the north, Wheal Dore and Wheal Alabaster to the west, Wheal Dore and Wheal Alabaster to the south, and Wheal Dore and Wheal Alabaster to the east, formed the world famous Binner Downs Mine complex. The mine was first opened in 1795, the date of its first copper export, and was closed in 1905. The mine was abandoned in 1905. The mine was abandoned in 1905. The mine was abandoned in 1905.

MINE SECTION PLAN

The section plan shows the mine in the first half of the nineteenth century and covers an area of about 100 acres. It shows the mine shafts, the engine house, the water wheel, and other shaft-head equipment. The plan also shows the mine's connection to the Cornish tin mines and the Cornish tin mines.

THE LANDSCAPE OF SOUTH BINNER DOWNS

The landscape of the mine is characterized by extensive mine waste barrows, and has been largely reclaimed by nature. The mine has created a rich and diverse wildlife habitat with its open moorland and willow scrub. The mine has also created a rich and diverse wildlife habitat with its open moorland and willow scrub.

BY 1838 THE MINE REACHED A DEPTH IN EXCESS OF 195 FATHOMS (338m)

The South Binner Downs Mine site is owned by Cornwall Council and managed as a space for the public to enjoy. Please follow the Countryside Code - respect nature, protect the environment, and enjoy the outdoors. Please note that motorcycles and other vehicles are not permitted on site and do not use off-road vehicles. Always keep dogs under control and on leads.

For further information on the World Heritage Site, Cornwall Council, Cornwall Council, Cornwall Council, or the Countryside Code, please visit the websites below:

www.cornishmining.org.uk www.cornwall.gov.uk www.cornwall.gov.uk www.gov.uk www.gov.uk

CORNWALL COUNCIL

CORNWALL COUNCIL

CORNWALL COUNCIL

EMMA PARKMAN



The pumping engine house at Wheal Peevor, near Radnor, February 2009



www.cornishmining.org.uk